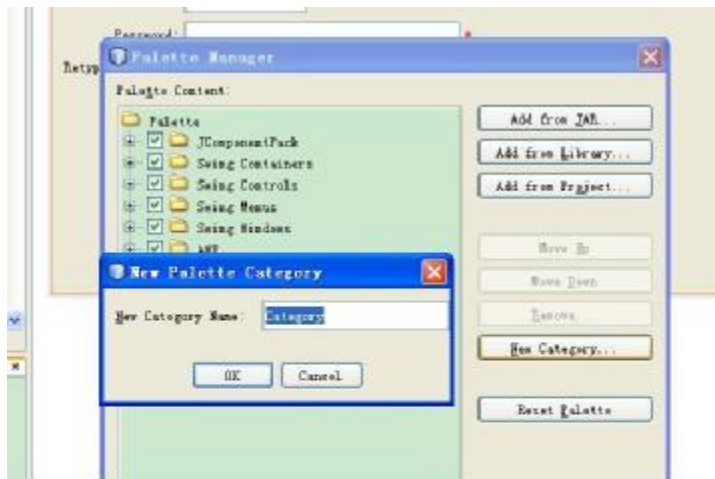


How to use “JComponentPack” in the NetBeans IDE 6.1

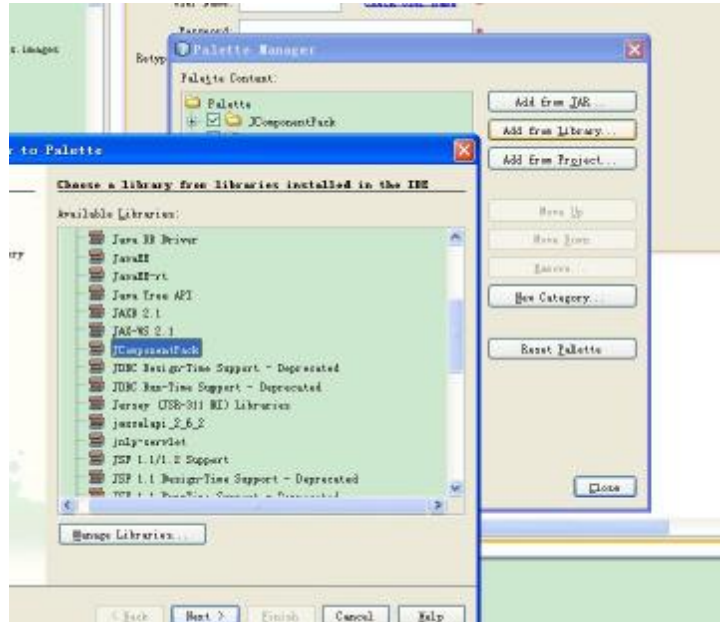
1. right click on Palette window, and select 'Palette manager...'



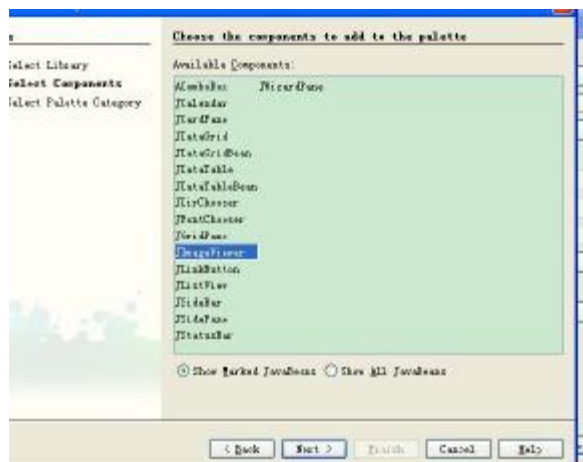
2. click 'New Category' button, enter a name then click 'Ok' button.



3. click 'Add from Library...' button, and select a lib from 'Available Libraries', then click next button.



4. select the component you need to use, and click next.



5. select the 'Palette Categories' you want put the component into, then click finished.



6. then you can use the component on Palette window.

